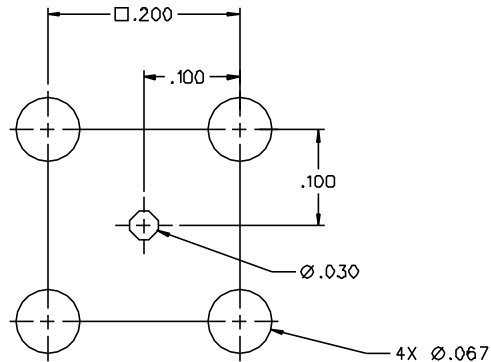


| PART NUMBER  | ITEM ①<br>BODY  | ITEM ②<br>CONTACT  | ITEM ③<br>INSULATOR | ITEM ④<br>INSULATOR |
|--------------|---|--|---------------------|---------------------|
| 133-8701-311 | BRASS<br>GOLD PL .00001 MIN OVER<br>NICKEL PL .00005 MIN OVER<br>COPPER PL .00005 MIN | BERYLLIUM COPPER<br>GOLD PL .00003 MIN OVER<br>NICKEL PL .00005 MIN OVER<br>COPPER PL .00005 MIN | TEFLON              | TEFLON              |



MOUNTING HOLE LAYOUT

NOTES:

1. SPECIFICATIONS:

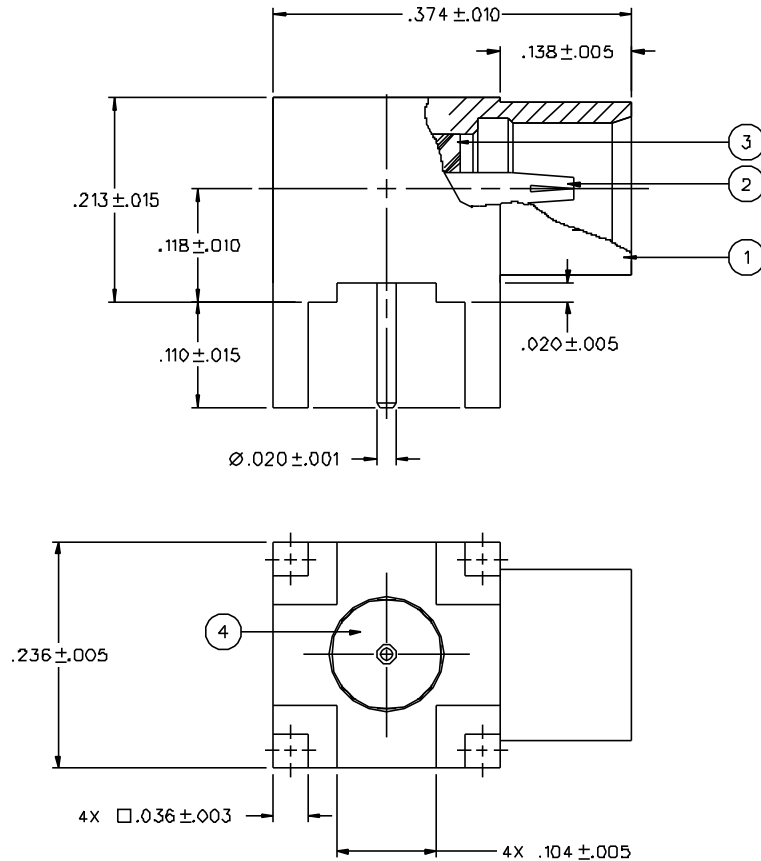
IMPEDANCE: 75 OHMS  
 FREQUENCY RANGE: 0-6 GHz  
 VSWR: NOT APPLICABLE  
 WORKING VOLTAGE: 335 VRMS MAX AT SEA LEVEL  
 DIELECTRIC WITHSTANDING VOLTAGE: 1000 VRMS MIN AT SEA LEVEL  
 INSULATION RESISTANCE: 1000 MEGOHM MIN  
 CONTACT RESISTANCE:  
 CENTER CONTACT - INITIAL 5 MILLIOHM MAX, AFTER ENVIRONMENTAL B MILLIOHM MAX  
 OUTER CONDUCTOR - INITIAL 1 MILLIOHM MAX, AFTER ENVIRONMENTAL 1.5 MILLIOHM MAX  
 BRAID TO BODY - NOT APPLICABLE  
 CORONA LEVEL: 250 VOLTS MINIMUM AT 70,000 FEET  
 INSERTION LOSS: NOT APPLICABLE  
 RF LEAKAGE: NOT APPLICABLE  
 RF HIGH POTENTIAL WITHSTANDING VOLTAGE: 600 VRMS AT 4 & 7 MHZ

MECHANICAL:

ENGAGE/DISENGAGE FORCE: 5.6 LBS MAX ENGAGEMENT  
 1.0 LB MIN DISENGAGEMENT  
 8.0 LBS MAX DISENGAGEMENT  
 CONTACT RETENTION FORCE: 2.3 LBS MIN AXIAL FORCE  
 CONTACT RETENTION TORQUE: NOT APPLICABLE  
 COUPLING MECHANISM RETENTION: NOT APPLICABLE  
 CABLE ACCEPTABILITY: NOT APPLICABLE  
 CABLE HEX CRIMP SIZE: NOT APPLICABLE  
 CABLE RETENTION: NOT APPLICABLE  
 DURABILITY: 500 CYCLES MIN

ENVIRONMENTAL:

(MEETS OR EXCEEDS THE APPLICABLE PARAGRAPH OF MIL-C-39012)  
 THERMAL SHOCK: MIL-STD-202, METHOD 107, CONDITION F  
 OPERATING TEMPERATURE: -65 DEG C TO 165 DEG C  
 CORROSION: MIL-STD-202, METHOD 101, CONDITION B  
 SHOCK: MIL-STD-202, METHOD 213, CONDITION B  
 VIBRATION: MIL-STD-202, METHOD 204, CONDITION B




|   |                              |
|---|------------------------------|
| DRAWING NO.<br>C - 133-8701-311/320                                 |                              |
| 0 REVISIONS   |                              |
| ENGINEERING RELEASE   |                              |
| 1   | 4-27-99 R H K T R ECN 46225  |
| 5.6 LBS MAX ENGAGE WAS 3.4.<br>1.0/8.0 DISENGAGE WAS 5.0<br>TYPICAL |                              |
| * REVISION NUMBER FOLLOWED BY AN ALPHA *                            |                              |
| * CHARACTER INDICATES DRAWING CLARIFY *                             |                              |
| * DATE OR PART NUMBER ADDITION ONLY *                               |                              |
| 1a  | 1-2-01 81 81 81 81 ECN 47566 |

CUSTOMER DRAWING

THIS DRAWING TO BE INTERPRETED  
 PER ANS Y 14.5M - 1982

"µSTATION"

COMPANY CONFIDENTIAL

|                                      |                    |                  |  |                                     |
|--------------------------------------|--------------------|------------------|--|-------------------------------------|
| TOLERANCE UNLESS OTHERWISE SPECIFIED | DRAWN BY<br>KAS    | DATE<br>10/14/98 |  299 Johnson Ave.<br>P.O. Box 1732<br>Waseca, MN 56093-0832 |                                     |
| DECIMALS<br>.XX                      | CHECKED BY<br>KAS  | DATE<br>4-28-99  | TITLE<br>MCX 75 OHM,<br>RIGHT ANGLE PC MOUNT JACK<br>.110 LEG LENGTH   |                                     |
| XXX--.003                            | APPROVED BY<br>TAK | DATE<br>5-4-99   | CODE NO.   | DRAWING NO.<br>C - 133-8701-311/320 |
| MATL                                 | APPROVED BY<br>RJB | DATE<br>5-5-99   | SCALE 10:1   | U/M INCH SHEET 2 OF 2               |
| FINISH                               | RELEASE DATE       |                  |  |                                     |